

Idaho Criteria for Opening Up: September 16, 2020

IDAHO SYNDROMIC CRITERIA - STATUS: MET

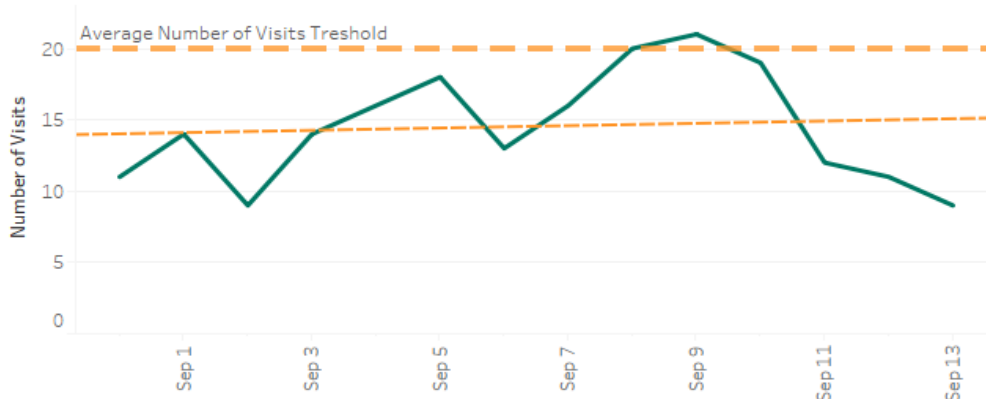


Downward trend or low numbers of COVID-19-like illness patient visits as tracked by Emergency Departments (ED) within a 14-day period. **METRIC:** Downward trend over most recent reported 14-day period, OR less than 20 visits/day on average over same 14-day period

Number of ED Visits for COVID-like Illness

The number of ED visits for COVID-19-like illness during August 31 - September 13 trended upward but the average number of visits for the prior 14-day period was less than 20 per day.*

*ED visits from the timeframe August 31 - September 13 were used to ensure the most complete and accurate dataset is available for trendline interpretation.



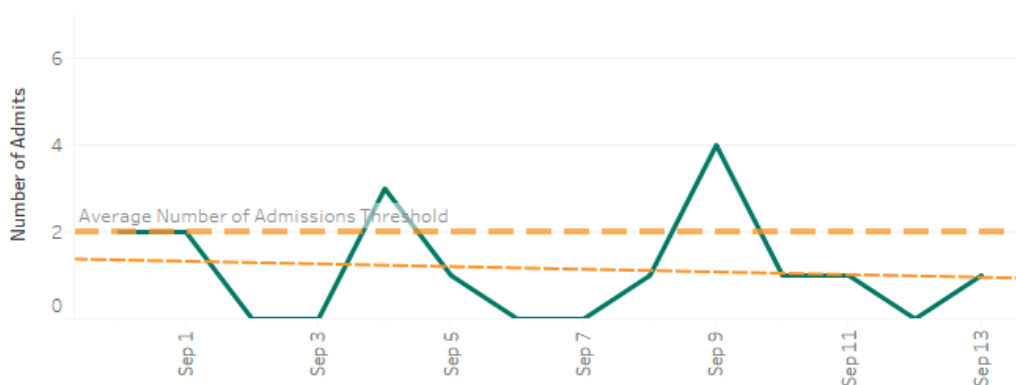
AND

Downward trend or very low numbers of patients with COVID-19-like illness admitted from Emergency departments within a 14-day period. **METRIC:** Downward trend over most recent reported 14-day period, OR less than 2 patients/day on average over same 14-day period

The number of ED patients with COVID-19-like illness admitted to the hospital during August 31 - September 13 trended downward and was less than 2 on average per day.*

*ED visits resulting in admission from the timeframe August 31 - September 13 were used to ensure the most complete and accurate dataset is available for trendline interpretation.

Number of ED Patients with COVID-like Illness Admitted to the Hospital



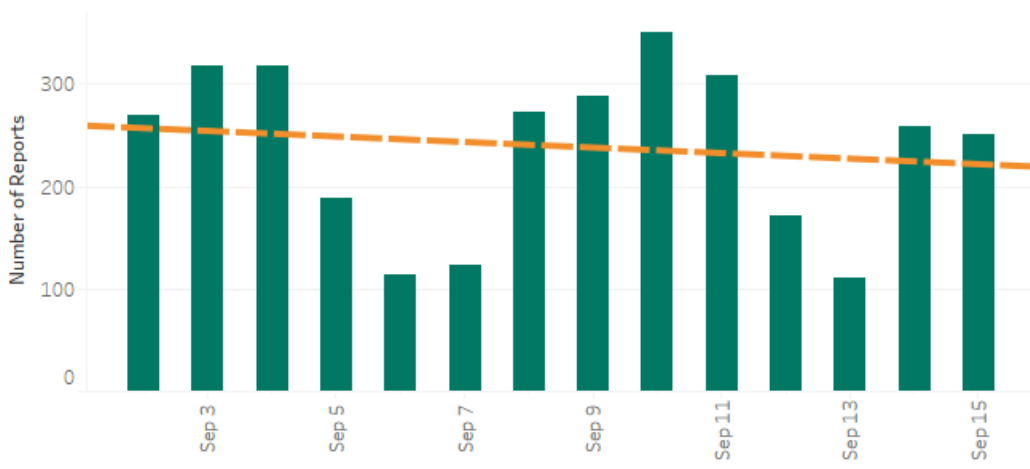
Note: All data are provisional and subject to change. Metrics measured using the most recently available data for the specific metric resulting in the "most recent 14-day period" referenced vary by metric.

Updated: 9/16/2020

Downward trend or low levels of documented COVID-19 cases reported within a 14-day period. **METRIC:** Downward trend over most recent reported 14- day period, OR less than 20 patients per day on average reported statewide over the same 14-day period

The number of reported cases during September 2 - September 15 trended **downward**.

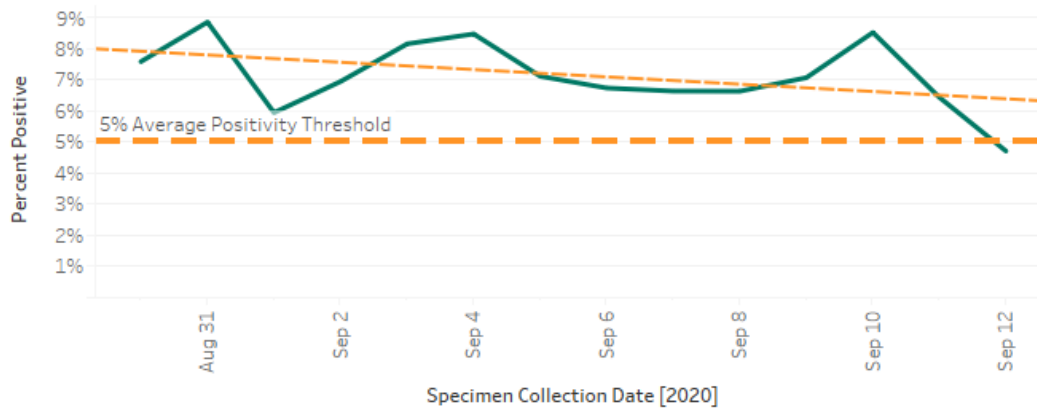
Number of Cases by Report Date



OR

Downward trend of positive COVID-19 PCR tests as a percent of total tests within a 14-day period (including flat or increasing volume of tests). **METRIC:** Downward trend over most recent reported 14-day period, OR less than 5 percent laboratory PCR positivity on average over same 14-day period

The percent of positive PCR tests during August 30 - September 12 trended **downward**. The average percent positivity for the prior 14-day period was **greater than 5% at 7.13%**.

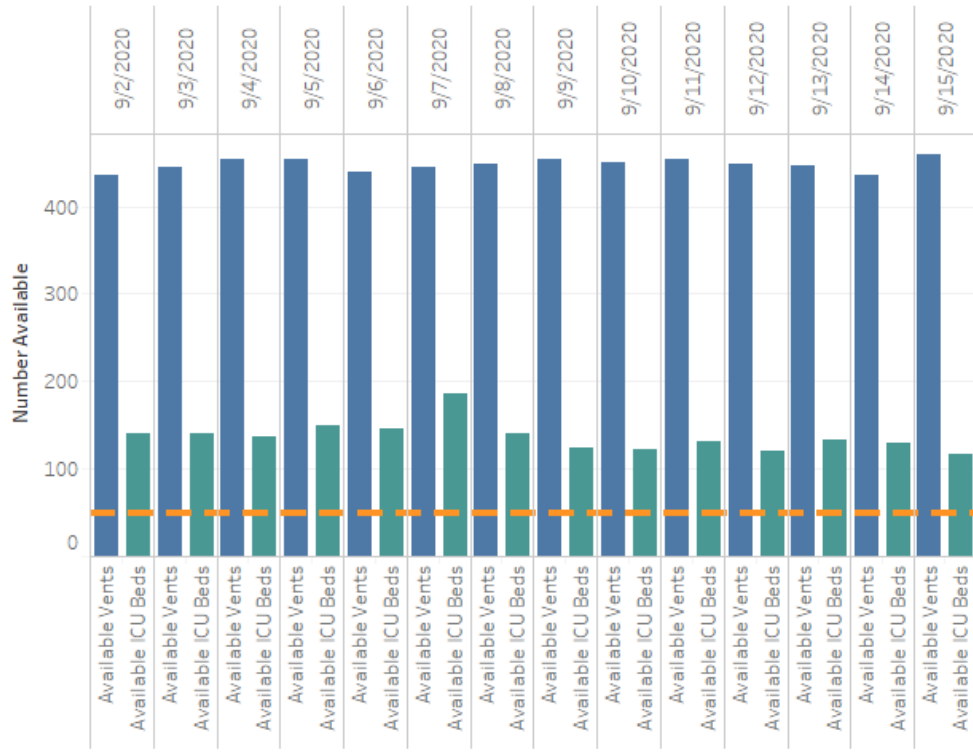


Note: All data are provisional and subject to change. Metrics measured using the most recently available data for the specific metric resulting in the "most recent 14-day period" referenced vary by metric. Updated: 9/16/2020

Available ventilators, intensive care unit beds, and personal protective equipment (PPE) to safely care for additional COVID-19 patients in hospitals. **METRIC:** At least 50 available (unused) ventilators, 50 ICU beds, and available 10-day supply of N95 masks, surgical masks, face shields, gowns, and gloves.

There were at least 50 ventilators and at least 50 available ICU beds available during September 2 - September 15.

Number of Available Ventilators and Intensive Care Unit (ICU) Beds



AND

Among hospitals reporting, there was at least a 10 day supply of PPE during September 2 - September 15.

AND

(continued on next page)

Note: All data are provisional and subject to change. Metrics measured using the most recently available data for the specific metric resulting in the "most recent 14-day period" referenced vary by metric.

Treat all patients without needing to use crisis standards of care. **MEASURED BY:** Governor's Order for Crisis Standards of Care in place; reports from hospitals.

MEASURED BY: hospital reports from most recent 14-day period downloaded from HHS Protect.

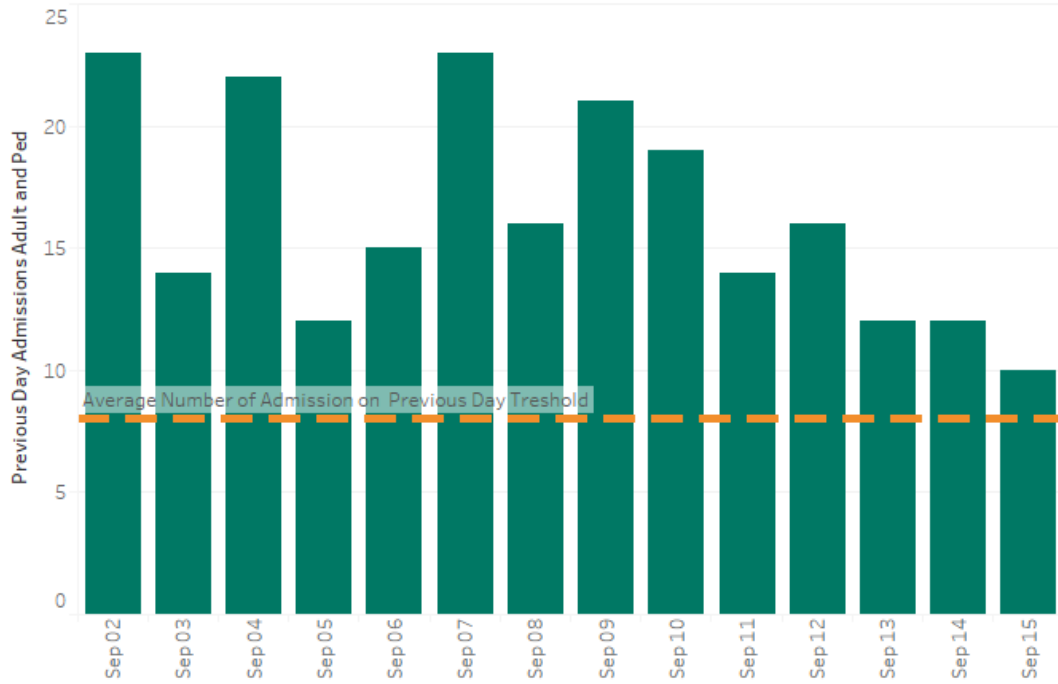
All patients are being treated without needing to use crisis standards of care.

AND

Hospital admissions of suspected and confirmed COVID-19 patients is less than 8 per day on average over the prior 14-day period. **MEASURED BY:** hospital reports from most recent 14-day period downloaded from HHS Protect.

The number of hospital admissions of suspected and confirmed COVID-19 patients was greater than 8 per day on average during September 2 - September 15.

COVID-19 Daily Hospital Admissions



AND

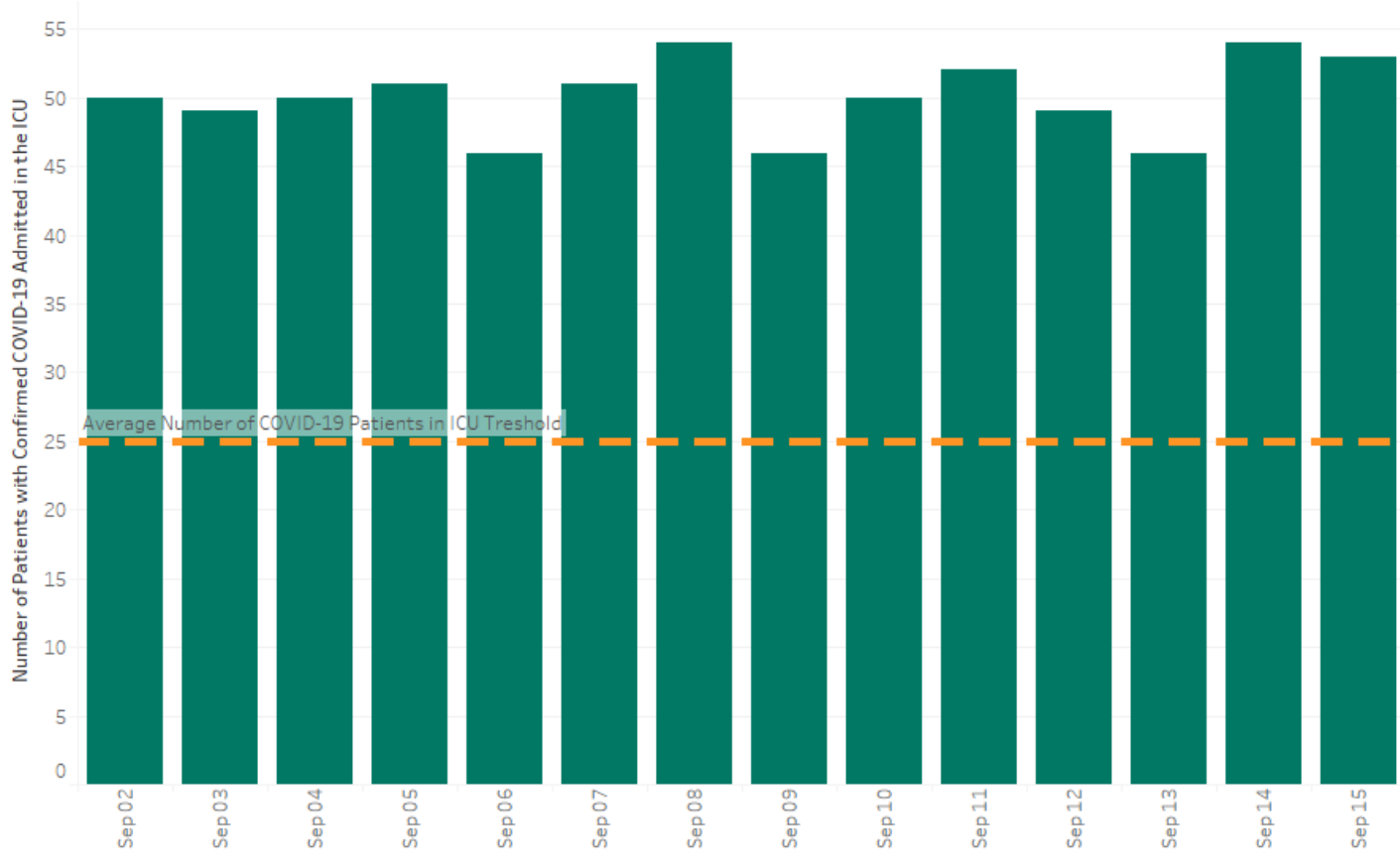
(continued on next page)

Note: All data are provisional and subject to change. Metrics measured using the most recently available data for the specific metric resulting in the "most recent 14-day period" referenced vary by metric.

Intensive Care Unit (ICU) admissions of confirmed COVID-19 patients is less than 25 per day on average over the prior 14-day period. **MEASURED BY:** hospital reports from most recent 14-day period downloaded from HHS Protect.

The total number of patients currently hospitalized in the ICU with confirmed COVID-19 was **greater than 25 per day** on average during September 2 - September 15.

Confirmed Total COVID-19 ICU Patients



Note: All data are provisional and subject to change. Metrics measured using the most recently available data for the specific metric resulting in the "most recent 14-day period" referenced vary by metric.